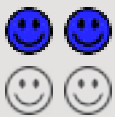




VIA FERRATA PONT DU DIABLE



Easy level - discovery
From 12 years old, at least 40 kg
and maximum 100 kg



5 mn walk before - 20 mn walk
after - 2h activity
half day course



closed-toed shoes and take a small
backpack with water to drink. Long
hair must be tied back



40 euros per person



25 kms and 30 mn driving from
Aubenas (07200)



Aerian path between hiking and
climbing with a 90m zip line which
takes you from one side of the Ar-
deche river to the other



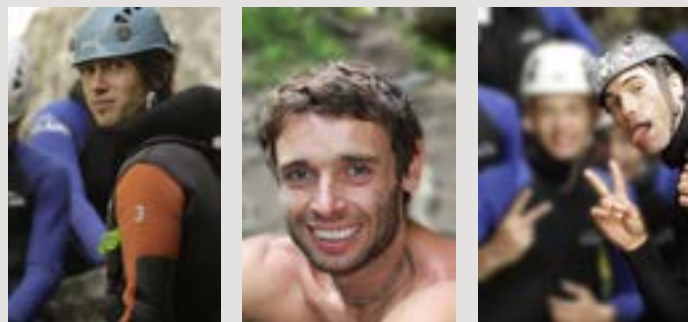
"Via Ferrata du Pont du Diable"
Avis écrit le 26/08/2014 sur Facebook (Thibault D.)
C'était super! a faire et refaire



HOW TO FIND US !

OUR PROFESSIONAL GUIDES !

From Aubenas, head towards :
 Le Puy – Mende (N 107).
 1 km before **Thueyts** (07330) take the
 small road on the left (« chemin sous la
 Roche » – «Le Pont du Diable» direction) –
 go straight to the car park **at the Pont du
 Diable** where you will meet your guide.



on **Google Map
 and flash**



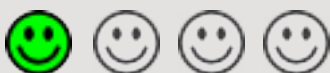
or **Google Map
 and type:** GEO via
 ferrata Thueyts

GPS: 44.672254
 4.222269 or 44°40'
 20.114 N 4°
 13'20.168 E

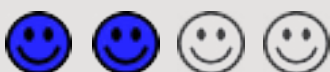


HOW TO CHOOSE YOUR TRIP ?

Take into account the **physical demands** required, indicated in each data-sheets with the following **symbols**:



very easy, ideal for family, equivalent to an easy 2 hour hike



easy, but requires caution, equivalent to a 3 hour hike



quite difficult, physical effort required, equivalent to a 5 hour hike



very difficult, physical preparation required, equivalent to 7 h

THE EQUIPMENT PROVIDED

